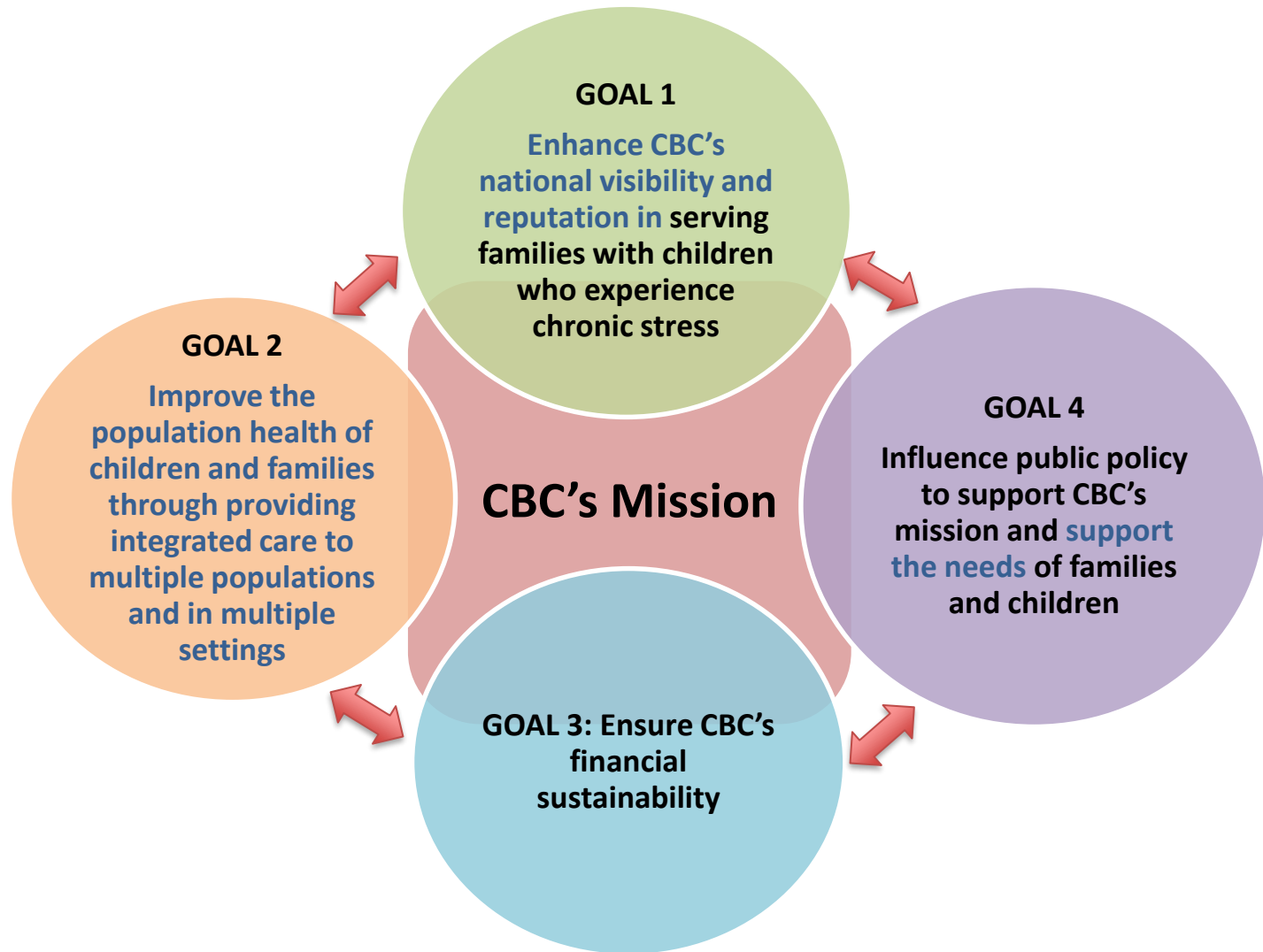




clifford
beers

MOVING FORWARD

Proposed 2017-2022 Strategic Planning Goals

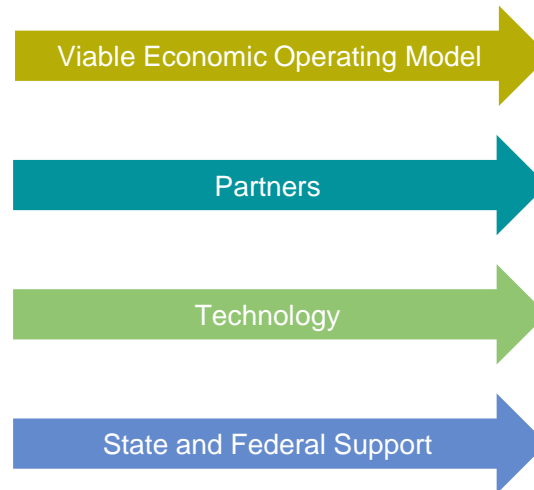


HELP • HEALING • HOPE

Achieving the Vision: innovation that results in opportunities to deliver the *best possible care* for all.

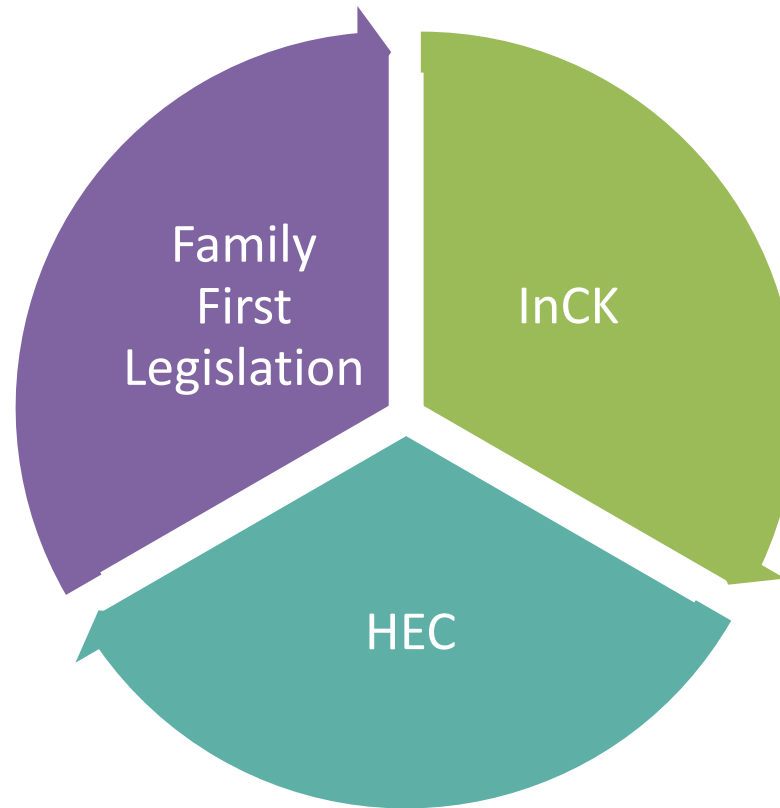


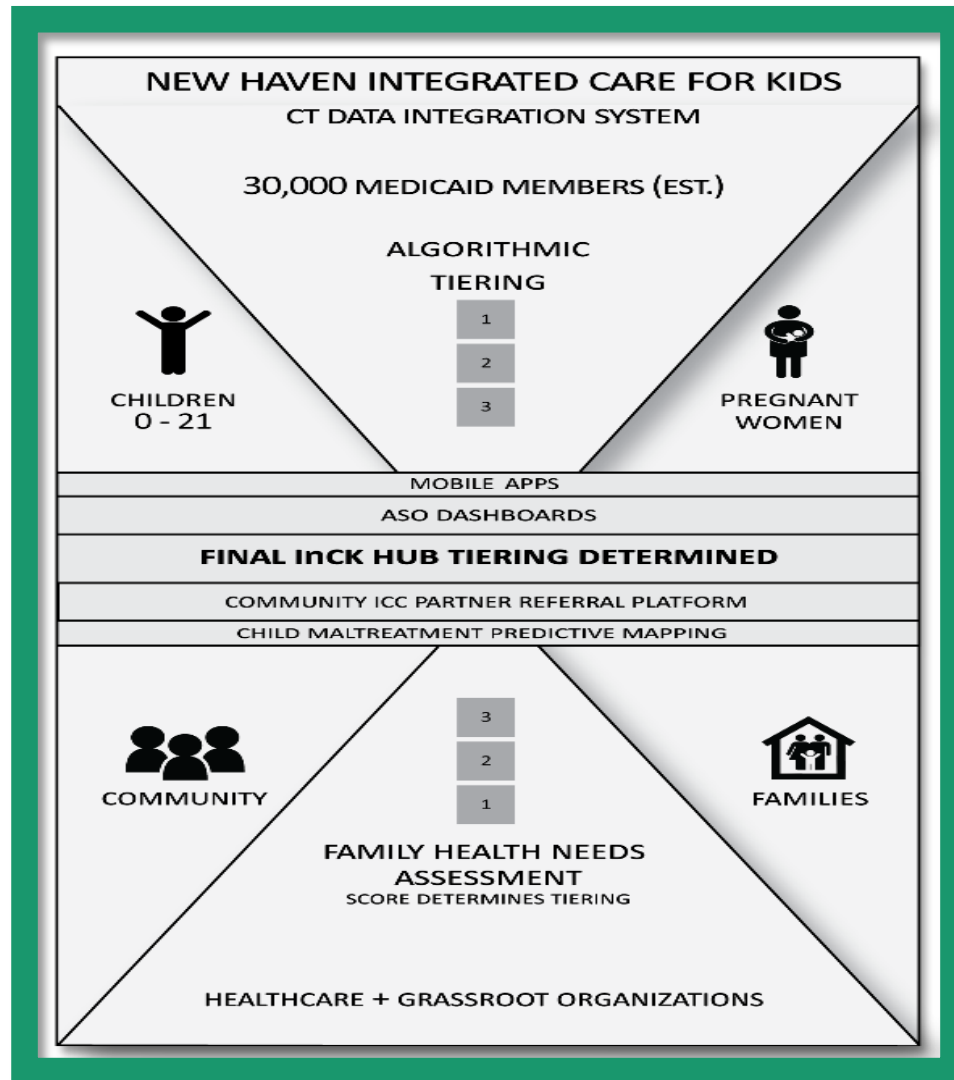
Requirements



Innovation that matters is at the core of Clifford Beers Health. Driving all innovation is an unyielding commitment to those who rely on Clifford Beers Health providers: our local communities.

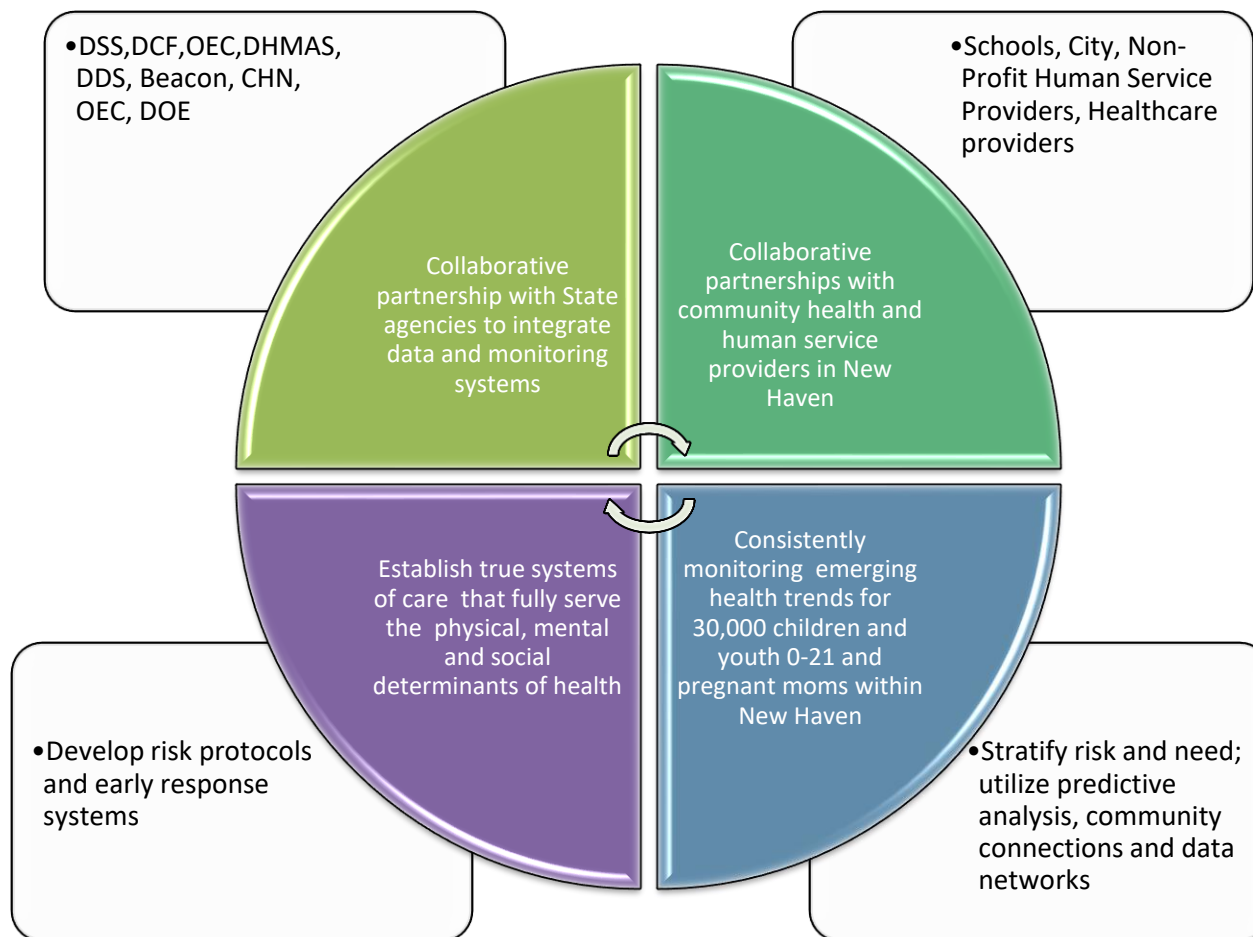
Current Healthcare/Child Welfare Environment





MOVING FORWARD

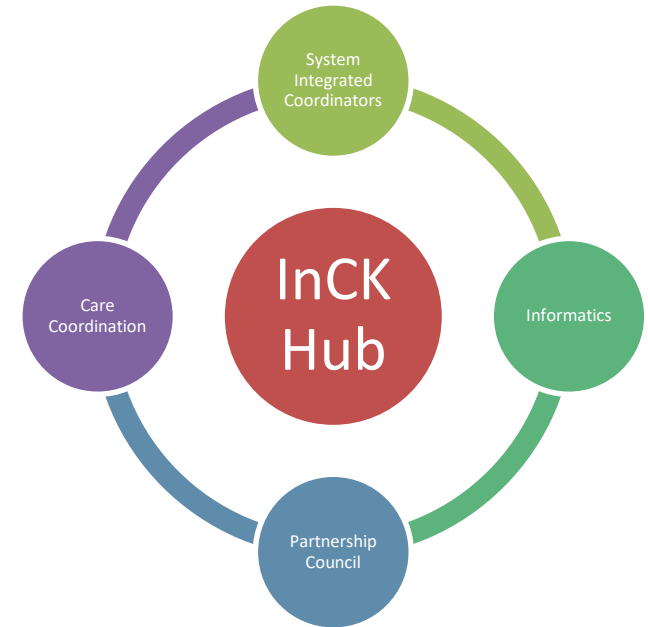
InCK's Population Health Management Strategy



MOVING FORWARD

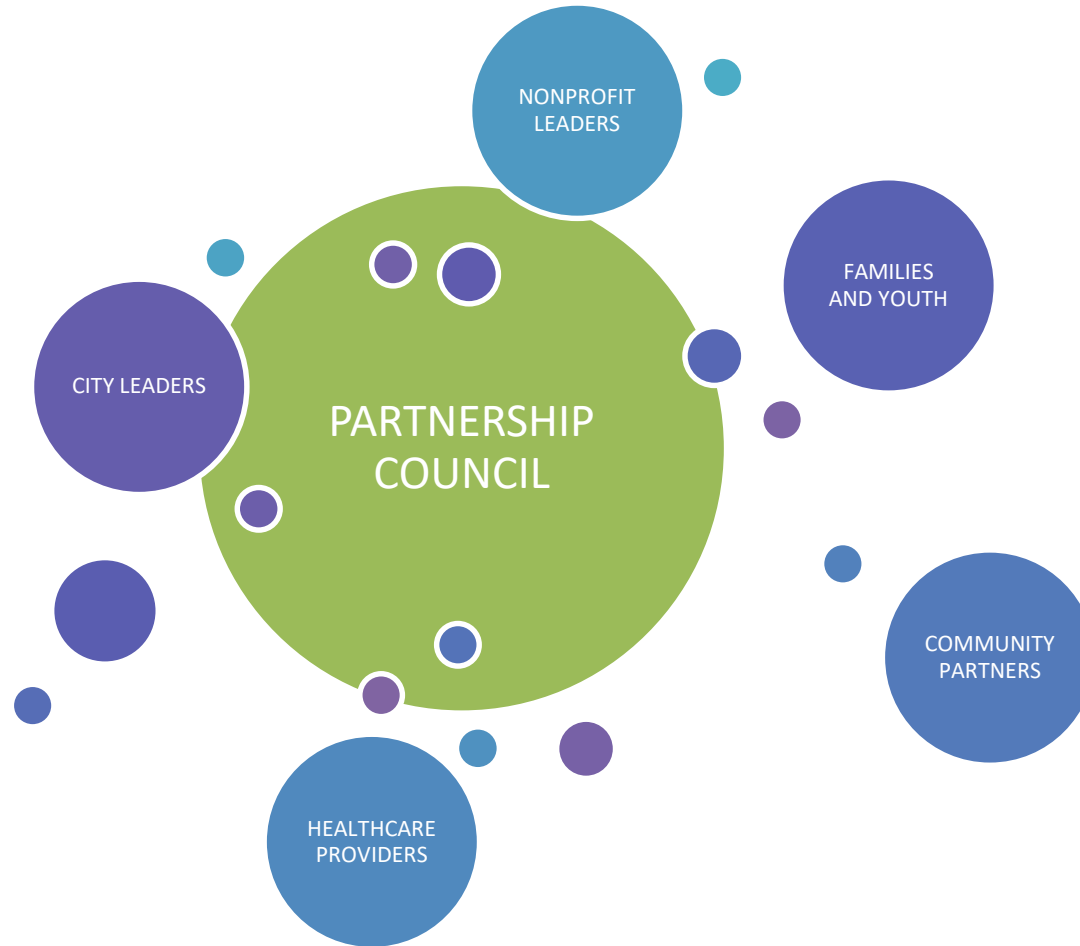
The InCK HUB (HUB)

- The HUB will be operated by CB, and perform and coordinate key system of care services.
- Employ a dedicated team Informatics Leaders to manage the HUB Data requirements.
- The HUB will coordinate the integration of Core Child and Pre-natal services in New Haven.
- CB will employ Service Integration Coordinators (SICs) who will be neighborhood based
- The InCK HUB will also manage the community partners (including CB) who will hire and deploy InCK Integrated Care Coordinators (ICCs) who will be the single point of contact for each attributed Medicaid- or CHIP-covered child/family/pregnant women with multiple complex service needs, symptoms, impairment, and risk of outplacement and their caregivers.
- The Integrated Care Coordinators will be supported through the InCK Alternative Payment Model (APM).
- The InCK Hub SICs will be the single point of contact for all ICCs.



MOVING FORWARD

The Partnership Council will be an advisory board comprised of members with a vested interest in children's welfare, a commitment to community system change, the ability to participate in the design and oversight in the Service Integration of the InCK program, and a desire to try to solve problems that they cannot solve alone to improve the experience of all children and pregnant women served.



MOVING FORWARD